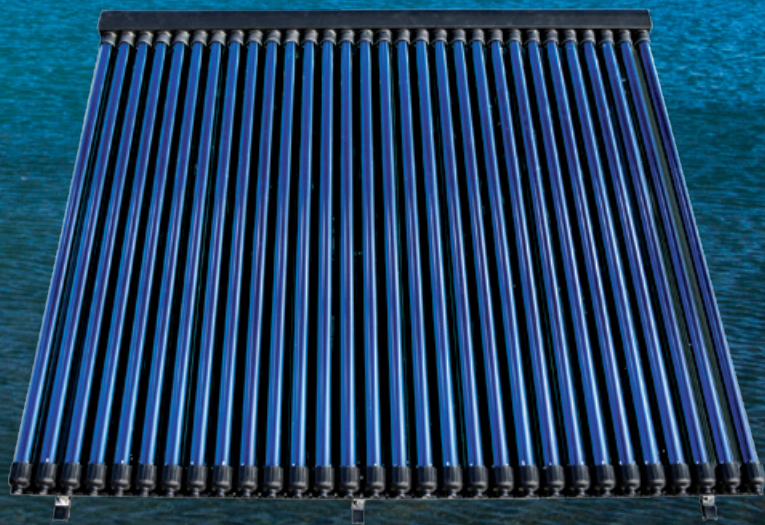


Only The Purest Energy Supplied From Above



# Ice Solar







Ice Solar Ltd was incorporated in 2007 as a solar industries supplier to the New Zealand market. Born with a vision to provide free energy to domestic commercial and industrial buildings.

Ice Solar has provided thermal energy solutions for hot water for single and multi-unit developments, residential, commercial, industrial, dairy farms, with hot water, applications for primary solar heating for adaptation to electric, gas, diesel, wood, wetback and numerous other secondary energy sources all over New Zealand.

The most effective way of heating water is using our solar thermal collectors.

Extremely low maintenance with very long life expectancy.

Simply no better alternative way for heating water.

Ice Solar is dedicated to helping people save on their energy bills.

### **The Financial Objective**

Most investors see any investment of 10% and over as an extremely attractive investment, particularly in the current economic climate.

Usually the higher the returns the higher the risk of the investment. Our Solar Systems have a 'savings return' starting at 20% depending on the water usage and heating arrangement that the Ice Solar System is replacing. This is a no risk simple investment with extremely high returns for your money.



## **Good Reasons To Choose Ice Solar**

- ✓ Ice Solar Offers The Best Advice, we specialize in solar hot water, talk to a professional
- ✓ Ice Solar has free ongoing support nationwide
- ✓ We have the highest performing collector on the market,
- ✓ This is for a single collector, equivalent to a massive of 1800watts
- ✓ Most user friendly & neat controller with functions that allow future expansion
- ✓ 10 Year guarantee
- ✓ Free trade support
- ✓ 'Plug & Play' solar pump & controller comes pre-wired & preprogrammed
- ✓ Takes less than a day for a plumber and his lad to install\*
- ✓ Freight guarantee anywhere in New Zealand
- ✓ EECA Approved; Free assistance with council consenting & compliance





## ICE STD 30 COLLECTOR

**Equivalent to 1.8kW**

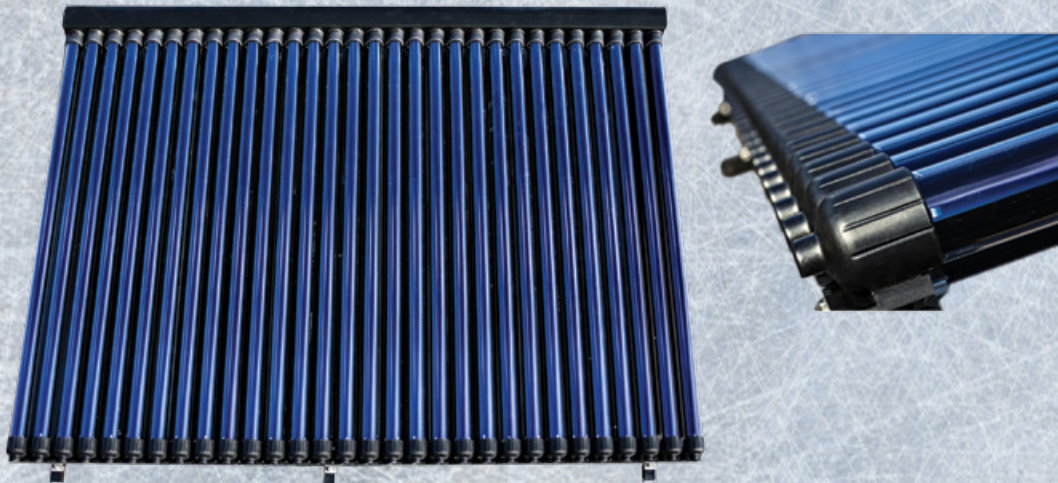
**Heats over 300Litres in Summer, and over 150-180Litres on a good solar day in the middle of winter**

**Ideal for 3-5 people**

**Recommended cylinder size 270-300Litres - can be fitted to all types**

**Can be fitted to as small as 180Litre Copper or Stainless**

**Cylinders (Not glass/enamel lined cylinders)**



## ICE STD 20 COLLECTOR

**Equivalent to 1.2kW**

**Heats over 210Litres in Summer, and over 100-125Litres on a good solar day in the middle of winter**

**Ideal for 1-2 people**

**Recommended Cylinder Size 180-250Litres - Can be fitted to all types**

**Can be fitted to as small as 135Litre Copper or Stainless**

**Cylinders (Not glass/enamel lined cylinders)**



**NOTE: If cylinders are being replaced use a Solar Ready Copper or Stainless cylinder for best performance**



# GOING ON HOLIDAY? HIT HOLIDAY MODE

Holiday mode sends hot water through the system at night cooling the temperature down, also turning off any time heating settings

## Extremely Competitive Pricing:

Our aim is to bring you the best products at the best prices, we welcome competition and we are confident you will not find a better price in the market for similar high performing product.

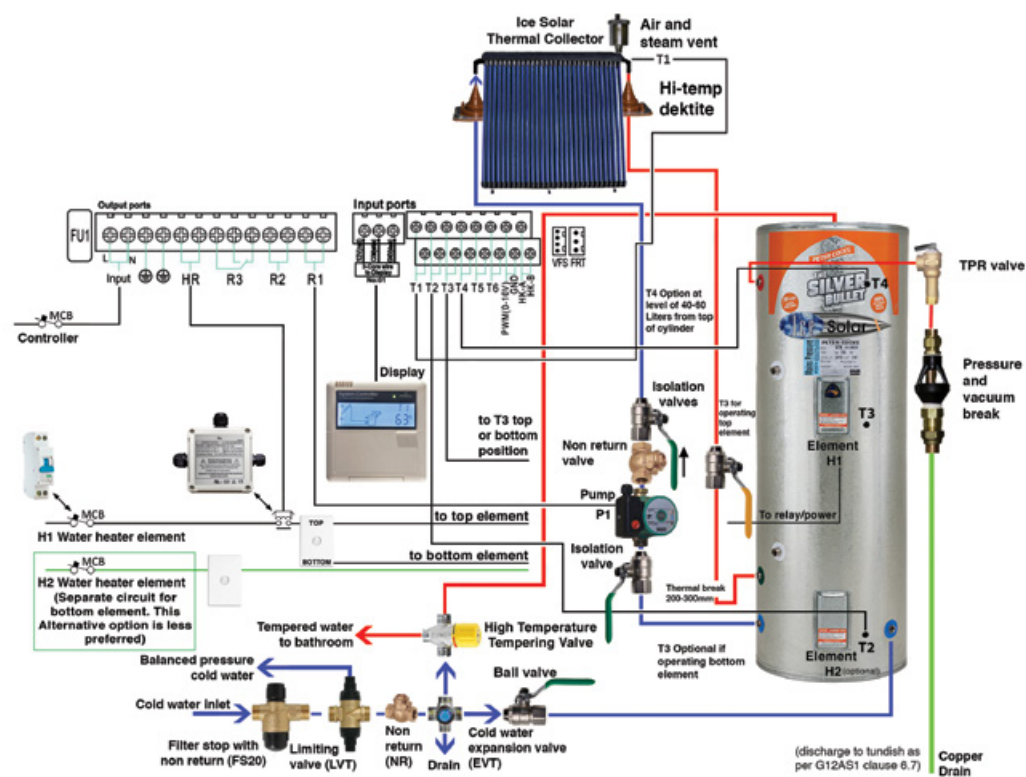
## How It Works

Solar Thermal Collectors work by capturing the solar UV radiation in an absorbent coating on the outside of the inner glass, the heat is then transferred via the highly conductive copper to heat the copper in the insulated manifold.

The hydrocarbon in the heat pipe is under a vacuum and therefore boils at very low temperatures. The liquid moves the heat up through the heat pipe to the manifold where it is captured in a heat exchange by the water flowing from the hot water cylinder. The heated water is always insulated and protected from the environment. This process is similar to how a wet-back operates but with a lot more control.

Our most popular STD30 collector the ICE094 saves the average family of 4 starting from \$70+ per month on their power bills  
That is a significant drop!

## Mains Pressure Open Loop Solar System With Electricity







## Heating Water With Solar?

### Solar Electric

3M x 4M

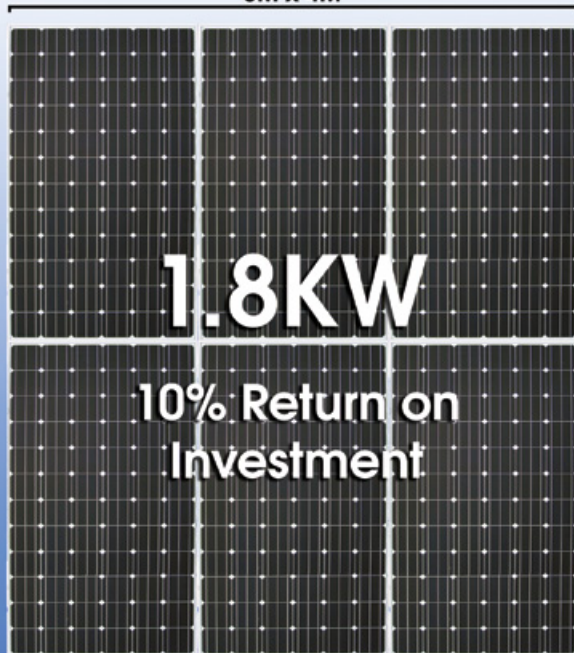
Most Hotwater Cylinders Use a  
3KW Element to Heat Water

### Solar Thermal

2.1M x 2M



**YES WE DO BOTH!**



Hot water typically makes up 40% of your homes energy bill!

With a monthly hot water bill for most families over \$200 and with power likely to at least double in the next 10 years that represents \$20,000 you are likely to spend on heating water in this time!

You can save most of this with a solar water system for a fraction of this price

### White Cloud

IceSolar panels perform generally with high solar gain during these conditions

### Grey Cloud

IceSolar panels perform gernerally with medium solar gain during these conditions

### Black Cloud

IceSolar panels perform generally with low solar gain during these conditions





An environmentally friendly way to produce power from our energy provider the sun. Reducing the need for fossil fuels such as gas and coal and minimising the demand on the communities' grid system power.

When combining a wetback fire system with an Ice Solar system, you are producing maximum all year round hot water gain. This means you can stop using your fire in the summer to heat year water and you can stop topping up your hot water cylinder with an electric element in the winter.

## Clean Green Technology For A Smarter Brighter Future



## WETBACK PLUS SOLAR WORKS LIKE A CHARM

USE ME ONLY IN WINTER

USE ME ALL YEAR ROUND





**New Zealand's most affordable and  
efficient solar collectors, With over 20  
years of experience in the solar industry  
and now one of the country's top selling  
Solar thermal systems**



**[www.facebook.com/icesolar](https://www.facebook.com/icesolar)  
[www.icesolar.co.nz](http://www.icesolar.co.nz)**



**Leading Solar Specialists**

**Phone +64 3 3554323  
[gordon@icesolar.co.nz](mailto:gordon@icesolar.co.nz)**